



TM.E.S.p.A
Termomeccanica Ecologia

Potabilisation plant with reverse osmosis of the island **Capraia (Li)**

The plant is made up of an integrated system of civil works and equipment including wells for seawater, pipes and connection cables, building, remote instrumentation and a automation system that makes the control possible from Leghorn, without continual surveillance.

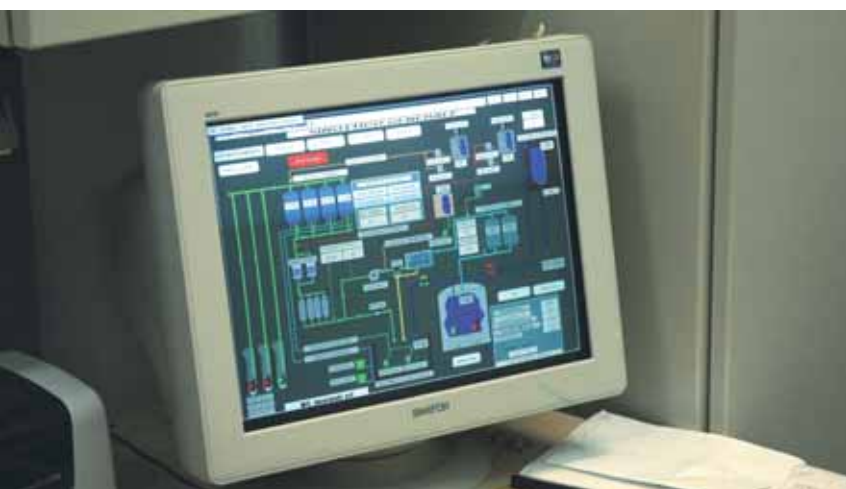
The realisation has permitted the supply of water to the resident and tourist population (up to 5,000 persons) without having to consider the variability of wind and sea that often make the island unreachable.



Water treatment

Potabilisation, Desalination and Remineralisation

Potabilisation plant with reverse osmosis of the island Capraia (LI)



- **Name of the plant:**
Potabilisation plant through desalination with reverse osmosis
- **Place of installation:**
Isola di Capraia (LI)
- **Client:**
Asa - Aziende Servizi Ambientali
- **Plant description:**
The reverse osmosis plant is taylor-made and highly automatized. The water is fed from three conditioned wells with 800 mm diameter, 20 metres in depth, realised on the basis of geophysical investigations.
The plant automatically adjusts itself to the variations of salinity and to the level of water in the wells.
In the same way, it takes into account the level of the remote tanks of potable water that are connected via radio.
A minimal quantity of chemical agents are used and no disinfectants are used.
The plant is set into the architectural context of the island according to the indications of the Fine Arts and Cultural Heritage Ministry and has to take into account the restrictions set by the Archaeological Property Office, being that in the past important archaeological finds have been discovered in the area.
- **Specific data:**
Production: from 80 to 500 m³/d
Feed quality: 5,000 - 40,000 ppm of salinity
Product quality: according to drinking water european legislation
- **Role of TME:**
“Turnkey” contractor



TME.S.p.A. - Termomeccanica Ecologia

Registered office: Via Lodovico Mancini, 5 - 20129 Milano - Italy
Head office: Via del Molo, 3 - 19126 La Spezia - Italy
Tel. +39.0187.5521 - Fax +39.0187.552215
www.termomeccanica.com • e-mail: box8@termomeccanica.com